

Postal Code 78666

Residential Statistics



October 2021

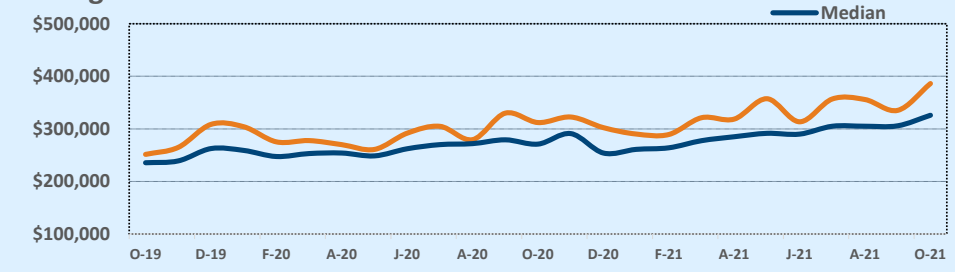
Listings	This Month			Year-to-Date		
	Oct 2021	Oct 2020	Change	2021	2020	Change
Single Family Sales	60	62	-3.2%	703	619	+13.6%
Condo/TH Sales	1	5	-80.0%	46	28	+64.3%
Total Sales	61	67	-9.0%	749	647	+15.8%
New Homes Only	12	9	+33.3%	100	130	-23.1%
Resale Only	49	58	-15.5%	649	517	+25.5%
Sales Volume	\$23,559,883	\$20,902,117	+12.7%	\$249,567,406	\$188,511,430	+32.4%
New Listings	65	71	-8.5%	914	765	+19.5%
Pending	--	--	--	--	--	--
Withdrawn	2	2	--	9	29	-69.0%
Expired	2	2	--	9	29	-69.0%
Months of Inventory	1.6	2.3	-31.3%	N/A	N/A	--

Price Range	This Month			Year-to-Date		
	New	Sales	DOM	New	Sales	DOM
\$149,999 or under	1	2	6	16	17	36
\$150,000- \$199,999	--	3	38	49	42	15
\$200,000- \$249,999	2	3	13	102	114	27
\$250,000- \$299,999	9	13	7	241	222	29
\$300,000- \$349,999	22	13	23	171	132	23
\$350,000- \$399,999	8	7	43	96	74	31
\$400,000- \$449,999	5	8	36	70	62	29
\$450,000- \$499,999	3	2	28	45	21	31
\$500,000- \$549,999	1	3	34	30	19	27
\$550,000- \$599,999	3	--	--	20	9	93
\$600,000- \$699,999	3	3	13	26	16	68
\$700,000- \$799,999	3	2	47	19	12	24
\$800,000- \$899,999	--	--	--	9	2	12
\$900,000- \$999,999	--	1	11	3	2	10
\$1M - \$1.99M	2	1	30	11	3	13
\$2M - \$2.99M	2	--	--	5	2	18
\$3M+	1	--	--	1	--	--
Totals	65	61	24	914	749	29

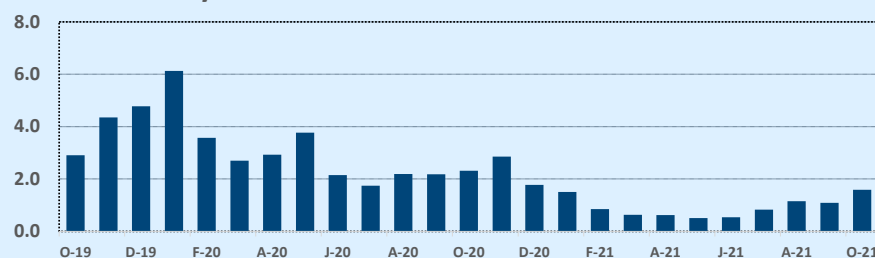
Average	This Month			Year-to-Date		
	Oct 2021	Oct 2020	Change	2021	2020	Change
List Price	\$389,731	\$317,918	+22.6%	\$328,212	\$297,791	+10.2%
List Price/SqFt	\$204	\$158	+28.9%	\$179	\$155	+15.6%
Sold Price	\$386,228	\$311,972	+23.8%	\$333,201	\$291,362	+14.4%
Sold Price/SqFt	\$204	\$157	+30.0%	\$183	\$152	+20.0%
Sold Price / Orig LP	100.3%	99.7%	+0.6%	102.1%	98.3%	+3.8%
Days on Market	24	57	-57.2%	29	78	-63.1%

Median	This Month			Year-to-Date		
	Oct 2021	Oct 2020	Change	2021	2020	Change
List Price	\$325,000	\$276,990	+17.3%	\$285,000	\$265,990	+7.1%
List Price/SqFt	\$199	\$158	+25.9%	\$170	\$150	+13.7%
Sold Price	\$325,900	\$271,000	+20.3%	\$294,176	\$264,500	+11.2%
Sold Price/SqFt	\$198	\$158	+25.4%	\$174	\$147	+18.4%
Sold Price / Orig LP	100.0%	100.0%	+0.0%	100.0%	99.3%	+0.8%
Days on Market	11	22	-50.0%	9	43	-79.1%

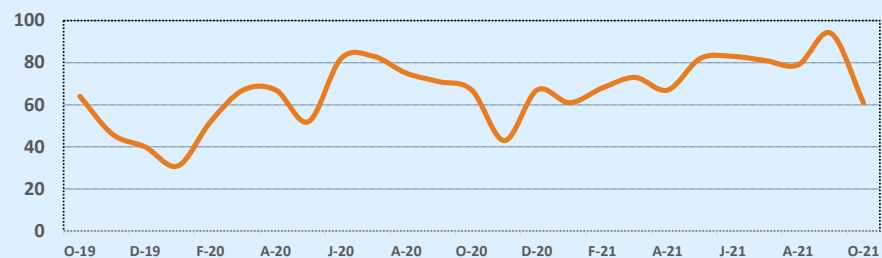
Average & Median Sales Price - Last Two Years



Months of Inventory - Last Two Years



Number of Sales - Last Two Years



Based on information from the Austin Board of REALTORS® (alternatively, from ACTRIS). Neither the Board nor ACTRIS guarantees or is in any way responsible for its accuracy. The Austin Board of REALTORS®, ACTRIS and their affiliates provide the MLS and all content therein "AS IS" and without any warranty, express or implied. Data maintained by the Board or ACTRIS may not reflect all real estate activity in the market.